

# WEIMAR INSTITUTE BULLETIN

BOX A, WEIMAR, CALIFORNIA 95736

SPECIAL INTRODUCTORY ISSUE

## The Growth of an Institute

Finding the roots of Weimar Institute is like trying to decide when a sunrise begins.

Did Weimar Institute begin on April 23, 1977, when the two-day-old board signed the purchase agreement on the 450 acre property in the California foothills? Or did it come to life in February of that year when several hundred Adventist laity (catalyzed by the invitation of Hewitt Research Center) gathered at the Placerville SDA Church to share ideas? Or do the roots go clear back into the early 1970's when groups began informal weekend retreats to study God's plans for personal spiritual growth and witnessing?

Or does it really matter? Surely the basic concepts upon which the Institute is founded have been stirring within the Adventist church for more than a hundred years, thanks to the God-led ministry of a certain Ellen G. White.

But there have been definite landmark events in our short history. Like the meeting at the Carmichael Church on April 21, 1977. Seeking the counsel of a broad base of dedicated Christians, the Weimar Task Force (an ad hoc committee to explore the Weimar property) sent out urgent phone invitations to a long list of persons who had previously expressed interest in such a project. More than seventy persons responded, coming to see if a cherished dream was about to be born.

For more than two hours, full attention was focused on an 18-page prospectus on the use of the Weimar property. Realizing that the decision to be made was not so much financial or organizational, as to know the mind of God, the assembled believers knelt in small groups for unhurried prayer. Immediately upon arising from prayer, each person was asked to indicate how he believed God would have us relate to the soberingly large project. Should we sign the papers committing ourselves to a purchase? Or should we back away, and await another opportunity? By secret ballot, each person was asked to vote "yes",



Weimar staff, students, and NEWSTART Guests gather at the front gate.

"no", or "uncertain."

Without exception, every ballot was marked in the affirmative! Seeing this as the most significant mandate the project could receive, a preliminary Board was formed that very evening, and the papers were signed the next day. Within 30 days, \$100,000 was raised to make the down payment.

God's blessings have kept pace with the expanding adventure. Qualified persons began volunteering to come to the newly-acquired site, at their own expense, to help it become a working institution.

As a result of much prayer, gifts of material and financial help began to flow. Never lavishly; but always just enough.

On occasions, the test of faith has been severe—as when a \$12,000 mortgage payment was due on Monday, and the previous Friday found less than a hundred dollars in the bank. But friends in a nearby community had offered some help. A Weimar representative met with them on Sunday morning, briefly outlining our needs to the seven men present. They adjourned with indefinite promises to "talk to my wife about

it" or "chat with my accountant." They knew the need was for \$12,000; yet they made no further plans among themselves, other than to try to make their gifts by 3 p.m. that day. By 3:15 that afternoon, a thin envelope held five checks. To everyone's surprise, they totaled exactly \$12,000. God's blessings are so precise that we've almost stopped being surprised. We continue, however, to be amazed and grateful!

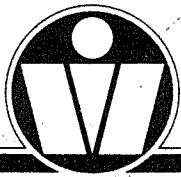
Families of staff workers began arriving at Weimar by the first of June. By the 17th,

the cafeteria began serving meals to the team, even though its roof leaked and the kitchen ceiling sagged. During the summer, with volunteer help from PUC Prep School, most of the cafeteria was re-roofed. But we couldn't find a 'hot-mopper' to do the flat section over the kitchen; they were all too busy. So we prayed. And the pieces began to fall together. A Weimar staff member knew a pastor who knew a member whose brother was a roofer. The roofer was working on a project partly owned by the father of the Weimar staff member! (Got that?) Arrangements were made for a short release from that project. He completed the job on Friday afternoon. Two hours later, the first storm of the season hit, bringing heavy rain. And we smiled at God's goodness!

Our architect assured us that the building permits for remodeling the Health Center would require six or more weeks to process. But we couldn't afford to wait that long, and we prayed the process would be shortened. The required signatures were in hand within 48 hours.

On November 4, guests began arriving for the first Weimar Retreat. The topic: "Righteousness by Faith in the Old Testament." One woman, a new Christian, came largely because of marital problems, hoping to do some counseling with one of the speakers. But by noon on Sabbath, she said, "We don't need to have marriage counseling; I've already found my answers!" Joy was evident.

A regular calendar of retreats followed bringing new faces and old friends to the Institute for weekends of refreshing study. From these, many persons became interested in joining the staff. The medical staff grew to the point where we believed we ought to begin the Health Education program even though our main building was not yet completed. In May of 1978, we accepted our first guests. Though their physical needs were serious, they were an eager and accepting group—as we refined our program. (Continued from Page 6)



## FROM OUR PRESIDENT



Quite often those who visit Weimar or those who write to us inquire regarding Weimar Institute's relationship with the SDA Church. Since many have indicated an interest in this, and since we are eager to have that relationship properly understood, I will attempt to answer several of the questions most frequently asked.

### Who owns and operates the Institute?

Weimar Institute is owned by a California non-profit corporation founded by a group of Seventh-day Adventists. Since it is a non-profit corporation, it is not possible for anyone to personally profit from the development of the property. The Articles of Incorporation provide that when and if the corporation is dissolved, all assets must be turned over to another non-profit corporation. A Board of Directors is responsible for operation of Weimar Institute and for the appointment of the administrators to carry out the policies of the institution.

### What relationship exists between Weimar Institute and the Seventh-day Adventist Church?

Since Weimar Institute is a private non-profit corporation, there are no legal or official ties with the SDA Church. This is the position that was taken after careful consultation with the Conference personnel at the local, Union, and General Conference levels. It means that the Church is not responsible for financial obligations of the institution, nor is it accountable for the programs and policies of the institution.

It is a position which allows Weimar Institute flexibility and freedom to implement programs which might be much more difficult within the policy framework of a large established organization. In short, it is a relationship based on cordial understanding and mutual benefit.

### What is your position in relation to the doctrines and beliefs of the church?

The most concise way to answer this question is to quote briefly from the Weimar Institute philosophy statement:

"Weimar Institute is conducting a work which is harmonious with the Seventh-day Adventist Church. Both in its expressed attitudes and formal relationships, the Institute will be loyal to, and supportive of, the beliefs, mission, and leadership of the Church...Weimar Institute believes that the Bible and the writings of Ellen G. White provide for us the highest, the most relevant, the most reliable authority for conducting our work."

### Do you support the activities and goals of the SDA Church?

Weimar Institute is strongly committed to uphold the mission of the SDA Church. All of the staff are members in good standing and are dedicated to support the principles of the Church.

Even though there are no legal or official ties with the Church, there are many unofficial connections through

# Why Students are Choosing Weimar College

By Susan Claridge  
Student, Weimar College

Weimar - a four year college, yet more. More than a college offering certain courses of study. More than a place where an education can be completed in a matter of years.

Weimar College is a school whose purpose is preparing men and women for service in this life and the life to come. What sets Weimar apart from other colleges? Why do students choose to come here?

Lois Dudar from Alberta, Canada, says she chose Weimar College out of a search for a more abundant lifestyle - one that would enhance the mental, physical, and spiritual aspects of her life. But most of all, she desires an education based on biblical truths.

Coming from Redlands, CA, Sharon Peters came to Weimar for genuine Christian fellowship. Her choice sprang from her desire for a closer walk with God; she hopes to learn how to more effectively share Him with others.

One student had made plans to transfer to another college after the fall quarter. But winter quarter found him back as a student on the Weimar campus. Why did he choose to return after all? He says that he's found the freedom and conducive atmosphere for learning a lifestyle in accordance with God's eight natural laws. (And that was enough for him!)

How do people like Lois, Sharon, and others find out about Weimar College? When asked this question, most answered that they had heard through word of mouth. Family, friends, pastors and others have been sharing their knowledge of the college.

There's a saying that "word spreads like a wild fire." That's what has happened to Weimar College. Already, by the beginning of 1981, 22 students from other countries have spent some time at Weimar College. Canada, France, Argentina, Germany, Denmark, Finland, Sweden, the Truk Islands, and Mexico have been represented, as well as 134 students from the 50 states of the Union.

Some may wonder why students choose to travel so far to receive an education. When asked this question, the general consensus shows that the number one reason for choosing Weimar is this: They see the college functioning in accordance with God's original plan for Christian education as made clear through the Bible and the counsels of Ellen White. A college that includes in its curriculum work-education experience and outreach activities.

As another student observes, "I wanted to simplify my life, and had heard about the lifestyle at Weimar College. So I came, hoping I'd be able to see real Christian education in practice. I'm relieved to say that I've seen here that it is possible for a school to follow God's guidelines. And I especially appreciate the spiritual atmosphere that has replaced the 'social' orientated one I was accustomed to elsewhere."

Now, that's worth traveling for!

## First Fee Increase In Three Years

With considerable reluctance, the Weimar Institute Board voted to increase Weimar College fees for the 1981-82 school year. This will be the first fee increase in the three year history of the Institute. The new all-inclusive rate for room, board and tuition will be \$1,200 per quarter. This represents a twenty percent increase, but is well below the cumulative inflation rate for the last three years.

Weimar College still represents excellent educational value, especially as it is estimated that the average cost of private college education in 1981-82 will be approximately \$8,000 per year. To enable students to help themselves, the summer work scholarship program

will be increased by 20% to keep pace with the fee increases.

Every effort is continuing to be made to keep educational costs as low as possible so that worthy students can attend Weimar College. Increased attention is being directed to the establishment of income-earning industries on the campus to facilitate this.

We recommend that students planning to attend college at Weimar next year apply early for summer work scholarship opportunities, so as not to be disappointed. We also continue to encourage those of our readership who are able, to help with scholarship and loan funds and to continually remember the needs of our students.

### Interested in attending Weimar College?

Are you the target of inflation? There's help through our summer work scholarship program.

### You can earn a work scholarship.

One third of your tuition cost can be met by fulfilling the minimum requirement of 480 hours of work. Even more can be met by putting in time over vacation periods.

### How do I apply?

To earn a work scholarship you first must be accepted as a student by Weimar College. Preference is then given to current, returning students. Others are chosen on a first come first serve basis.

### Applications are now being accepted.

For information write: Dean of Weimar College, Box A, Weimar, CA 95736.



College students work side by side with NEWSTART guests in Weimar's agriculture program.

# “My Heart Attack Cost \$40,000!”

By Buell Hall, S.D.A. Minister

(as told to Aileen Ludington, M.D.)

The Friday after Christmas I had my coronary. I went to my doctor's office, and after examining me, he put me in a wheel chair and pushed me directly to the hospital coronary care unit. Despite these precautions, I had two more coronaries in the next three days. At the end of the week I had open heart surgery with four by-passes. When my heart rate dropped to 32 they put in a pacemaker also. A few days later problems developed, so another operation was necessary. By the time I was able to go home, I had cost the conference \$40,000! I have a friend (a fellow minister) whose heart surgery three months ago cost \$25,000.

I wish I'd gone through the NEWSTART program years ago. I really feel it might have prevented what happened. I think most of our ministers are heading in this direction. If only the conference could send every minister up here! It could save many of them from a similar fate, increase their productive years and save a lot of money. Why, the cost of Roland's and my surgeries alone could probably send most of the ministers in our conferences through this program!

I didn't become an Adventist until age 36. Before that I did everything wrong. I grew up on bread and sausage. I smoked heavily for 15 years, 3 packs of cigarettes a day plus 2 cigars. My diet was terrible too, and I've been overweight most of my life. After I became an Adventist I gradually changed from meat to the vegetable protein analogs. But I still ate plenty of eggs, butter, milk and cheese. Oil and sugar too. When I became a diabetic a few years ago my diet improved somewhat. However, even after my heart surgery I did not receive any specific dietary information. I didn't know anymore about food than before.

Before my heart attack I was averaging 28 Bible studies a week. I traveled a lot, and would grab a quick bite at a restaurant between calls. And when I'd get home in the late evening I'd sit down to a hearty meal. You can see why I wish I'd understood this way of life before. Why, if all Adventists were living like you are here at Weimar, we would almost eliminate all our health problems.

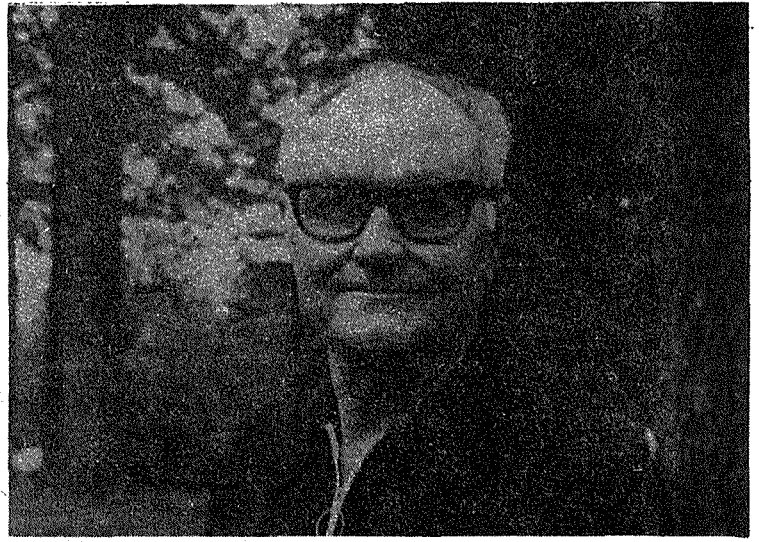
When I came up here last Sunday I had no idea what to expect. I thought it was a retreat-like place, that I'd need my sleeping bag. I was pleasantly surprised by the modern lodge, the beautifully furnished rooms with private baths.

Now that I've been here ten days, listened to the lectures,

and watched the demonstrations, eaten the food, walked the trails, and watched the people, I can say that this is the most fantastic thing I have ever seen! This is a program that makes sense to me, **THIS IS THE WAY ADVENTISTS WERE MEANT TO LIVE!** It is a total thing, a balanced program.

I've learned more from the lectures here than I've ever learned from any source before. I now know WHY I should do these things. This is the way we should be living as we prepare for heaven.

My biggest regret is that my wife was not able to come with me. But I have a notebook bulging with notes, and I bought every single tape. I'll be busy the next two weeks teaching this course to her.



Buell Hall

## Why We Call It NEWSTART

A quiet evolution has been underway in the development of a name which adequately describes Weimar's health program. Though opened originally as the Health Conditioning Center, it soon became evident that this title was somewhat misleading. Some people expected a gymnasium-type program in a luxury spa! A year later, it was renamed the Health Education Center.

Though this identity seemed satisfactory for awhile, in time many felt it to be too general and only vaguely descriptive of the program's unique characteristics. Was there a better solution? Yes! It came wrapped in a concept expressed by the term "NEWSTART."

Some concepts are so new that time is needed to develop their special characteristics — to define

their functions. Only later is it possible to give them a name that is more fully descriptive and satisfactory.

An example of a rather historic item that suffered from this identity crisis in its inception was the wireless. It had been in use for quite some time before it finally came to be known as the radio. The concept remained the same, but the name was adapted.

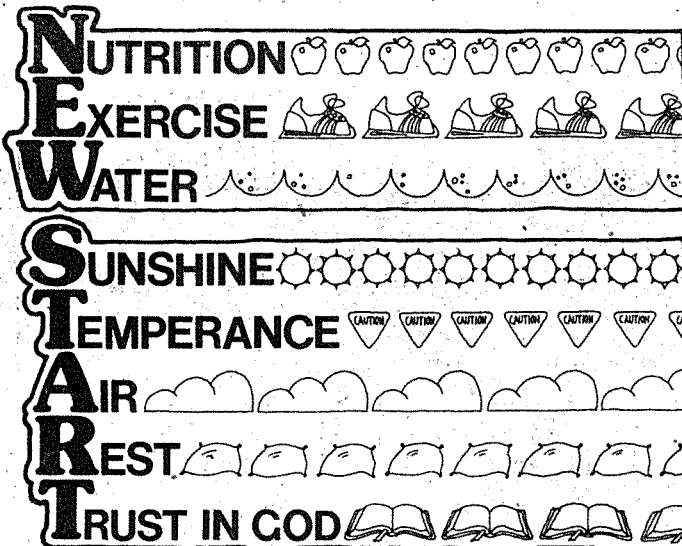
Another example is the "Edison", later called the "gramophone", and still later the "phonograph."

And though the concepts of Weimar's health program are not new (the principles on which it is based are as old as God's natural laws), a health program that employs these principles in a modern setting adapted to man's contemporary needs is a fairly recent phenomenon.

(Continued on Page 7)

The mechanism of the human body cannot be fully understood; it presents mysteries that baffle the most intelligent. It is not as the result of a mechanism, which, once set in motion, continues its work, that the pulse beats, and breath follows breath. In God we live and move and have our being. The beating heart, the throbbing pulse, every nerve and muscle in the living organism, is kept in order and activity by the power of an ever-present God.

Ellen G. White



Source: Ministry of Healing, p. 127; Slogan: NEWSTART Health Center guest Bill Dawson.

## WEIMAR INSTITUTE

Weimar Institute is a multi-phased ministry whose keynote is SERVICE. Working in harmony with the basic tenets of the Seventh-day Adventist Church, the Institute is comprised of physicians, educators and other laymen. Our primary goal is to uplift God's character as the One who restores His image in His people on earth. Weimar Institute ministers to the physical, the mental and the spiritual aspects of humanity. Relying solely upon the free gift of the righteousness of God revealed in the Person of Jesus Christ, the Institute openly confesses that no function of its ministry can detract from the reality of that One Source of salvation. Rather, we desire that His righteousness shall become more believable to others because of this service to which we ourselves have been called. (2 Tim. 1:9, Eph. 2:9-10)

### ADMINISTRATION

Robert L. Fillman ..... President  
 Kent Dickinson ..... Business Administrator  
 Dick Winn ..... Secretary  
 John Sipkens ..... Director of Labor

### NEWSTART HEALTH CENTER

Henri Wiebe M.D. .... Acting Medical Director

### WEIMAR COLLEGE

Colin Standish, PhD. .... Dean of the College

### RETREAT MINISTRY

Dick Winn ..... Chaplain/Director

### BOARD OF DIRECTORS

Jim Alexander, M.D.	Alan R. Magie, PhD.	Juanita Swan, MS
Ken Baker, JD	Raymond Moore, PhD.	Charles Tam, M.D.
Larry Baumbach, JD	Jeri Orr	Gordon Wheeler, M.D.
Sherman DeVine, M.D.	James Richmond, M.D.	Marilyn Wilcox
Thomas S. Geraty, PhD.	Floyd Rittenhouse, PhD.	Clyde Willard
Merritt Horning, M.D.	Charles L. Starnes	Erhardt Zinke, M.D.
	Ralph Sturgill	

### WEIMAR INSTITUTE BULLETIN

Pat Payne ..... Editor  
 Veronica Morrish ..... Assistant Editor

Weimar Institute is a non-profit organization operating under section 501 (c) (3) of the Internal Revenue Code. Tax deductible receipts will be issued for cash donations and in acknowledgement of material gifts. The Institute may be named to receive a bequest by will. The appropriate designation should be: Weimar Institute, Weimar, California 95736. Deferred gifts by wills or trusts will be gratefully received.

### OFFICE HOURS

Monday through Thursday: 8:00 A.M.-5:00 P.M.  
 Friday: 8:00 A.M.-4:00 P.M.  
 Sabbath and Sunday: Closed  
 Telephone: Business line (916) 637-4111 or 878-7222

### VISITORS

Due to the rapid growth of the "Weimar family" we have extremely limited guest facilities. PLEASE, if you plan to visit Weimar overnight, make advance reservations. Otherwise, we cannot guarantee accommodations. Thank you for this consideration.

We do not conduct Sabbath services at Weimar Institute. If you plan to join us for Sabbath meals, please make prior arrangements for meal tickets.

A casual walk through the campus? Most anytime you want. A meeting with the President or other staff members — please write or phone ahead to confirm an appointment.

# Weimar Institute - We're

Weimar Institute is a multi-phased program that includes a Health Education Center, a small College, a Community Outreach program, and a weekend Retreat Center. Eventually, an Active Senior Ministries program will be included as well. Each phase of the Institute is strengthened by the others.

Just 12 miles east of Auburn, CA, on Interstate 80, the Institute occupies the former Weimar Medical Center grounds and encompasses 450 acres of rolling timberland. Several of the 38 buildings have been remodeled to meet the Institute's needs; others stand ready for use as the program expands.

The Weimar Medical Center, operated by 15 local counties for over 50 years, closed in 1971. It had been a tuberculosis center and, in later years, an acute care facility. In the years that followed, the Center was juggled from one private owner to another. Several hundred Vietnamese refugees moved in for nine months in 1975.

Once well-equipped to stand as a self-contained community, the Center progressively lost valuable medical equipment, bedding, and other supplies as owners and occupants came and went.

A group of Seventh-day Adventist Christian professionals discovered the property in the spring of 1977. The down payment was made and a skeleton staff moved in during June of that year. Weimar Institute was under way.

Although not operated by the Seventh-day Adventist Church, Weimar Institute works in cooperation with its leadership. There are a number of such independent programs working as arms of the Church throughout the United States and Canada.

### Financial Support

How does Weimar Institute exist financially?

In its first 11 months of existence, the Institute generated no income of its own. Yet the extensive remodeling

needed to adapt and repair the buildings required huge amounts of money. The Institute was supported almost entirely by gifts sent through the mail and by visitors who became excited by its prospects.

Because the Institute leadership and staff were convinced that God had His hand firmly over the entire project, needs of enormous size as well as daily operational requirements, were left to His providence.

Skilled workmen donated their time, equipment, and supplies in well-ordered se-

regardless of their work, receives a small monthly stipend, in addition to room and board.

"Working here isn't any sacrifice," comments one staff member. "Just the opposite, in fact. There isn't anywhere else I'd rather be than here, at this time, receiving these blessings, and participating in such an exciting work."

### Retreat Center

The first phase of the Institute to operate was the Retreat Center.



### NEWSTART Health Center guests find exercise fun and beneficial during their stay at Weimar Institute.

quence as the needs arose. Finances arrived to help the Institute at each crucial point of development. As the project was left more and more completely by faith in His hands, things began to fall together.

Even now as the College and NEWSTART Health Center generate more funds, the Institute still relies upon gifts for all of its capital development. And God continues to bless the project as those involved depend upon Him.

By the spring of 1980, the staff exceeded 80 persons. Because the Institute still has so many developmental needs, each staff members,

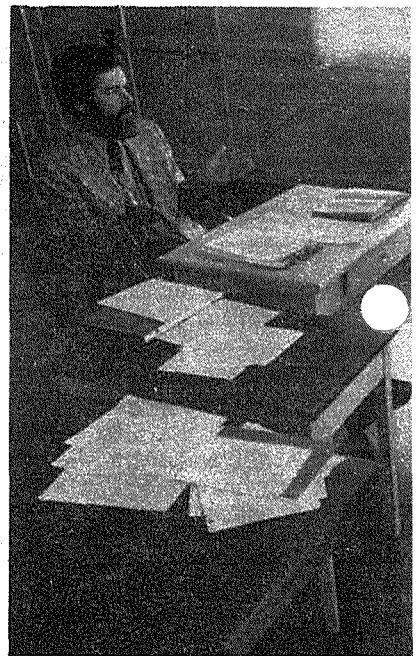
Beginning in the winter of 1977, more than 20 different retreats have been conducted. Groups of 40 to 50 persons from throughout California and the northwest have joined the ever-growing Weimar staff in group study and discussion of current Christian issues. With the beginning of the College, however, the retreat schedule has been somewhat curtailed; since the Retreat Lodge is used for student housing.

### NEWSTART Health Center

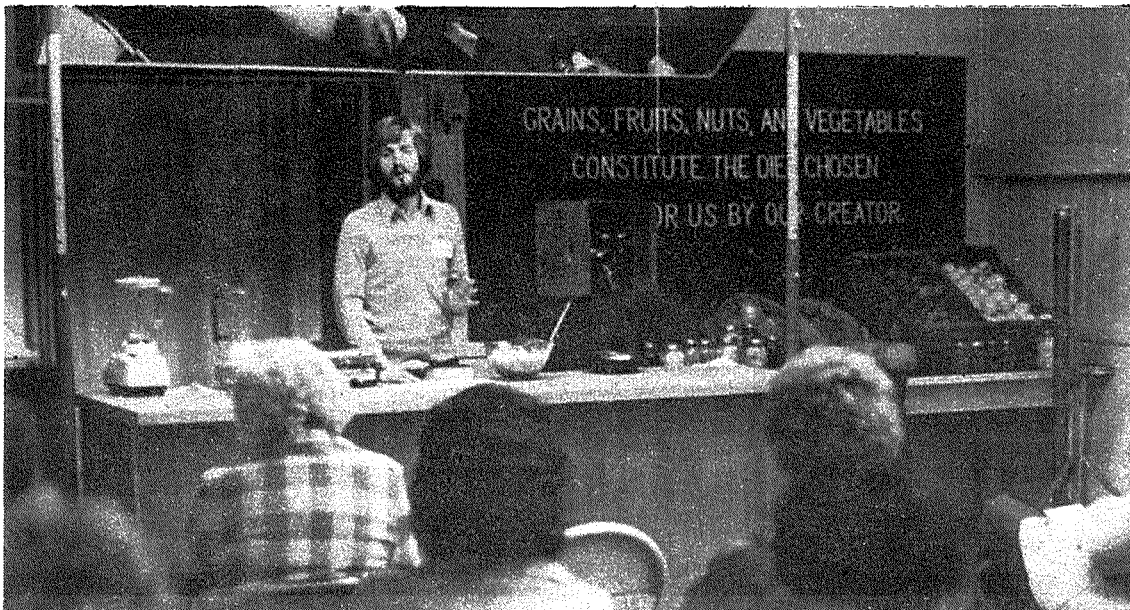
The 25-day, live-in NEWSTART program began in May of 1978. A staff of four resi-

dent physicians lead a medical team that includes registered nurses, physical therapists, a nutritionist, and counseling personnel. Several other nearby physicians serve as consultants and lecturers. There is no acute care facility and guests admitted to the NEWSTART program must be ambulatory.

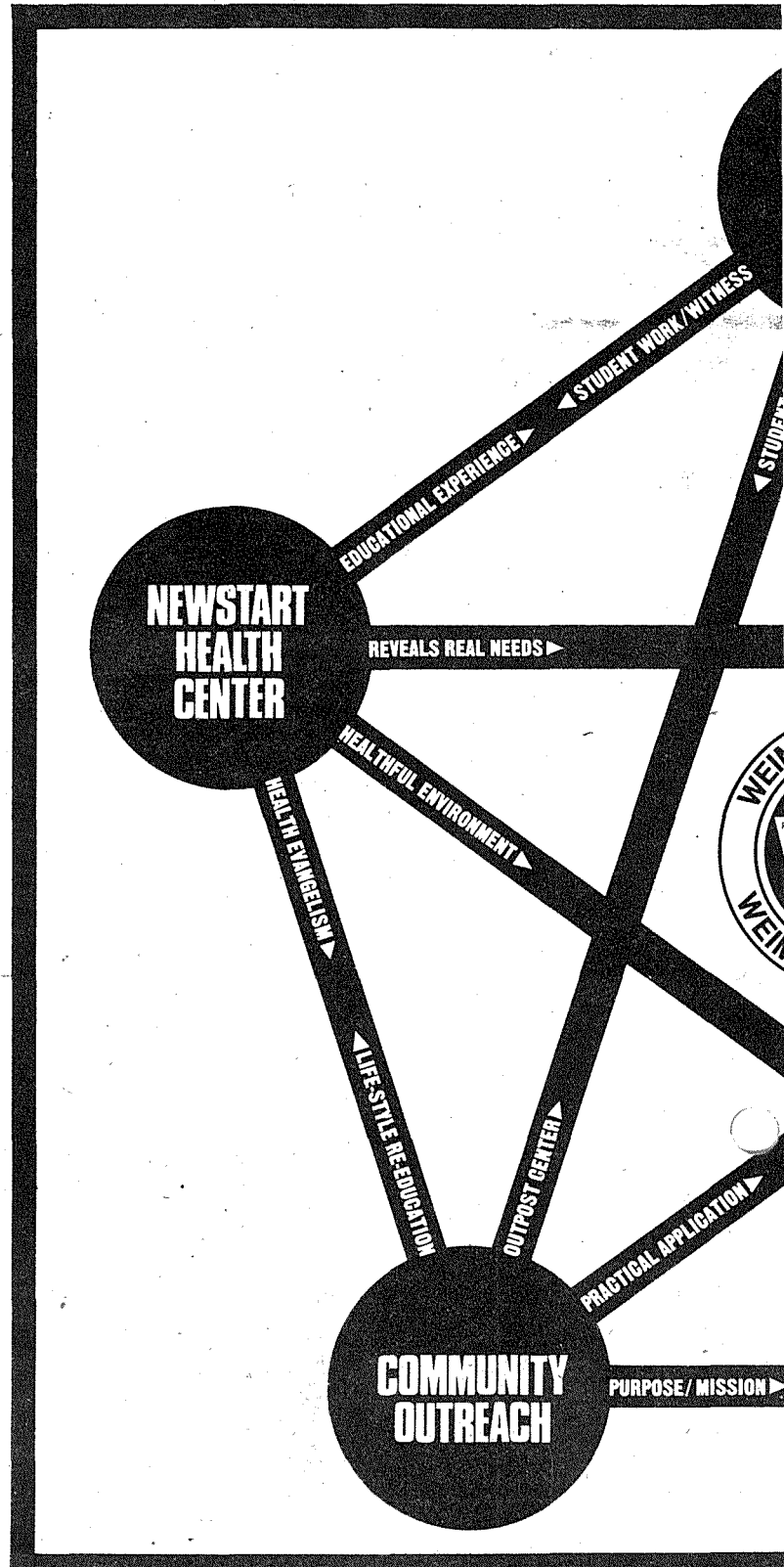
The NEWSTART is based on the natural healing agencies which are employed in the program: Nutrition, Exercise, Water, Sunlight, Temperance, Air, Rest, and Trust in divine power. These remedies and how they work are the subject of daily physicians' lectures and the core of Institute life. Bi-weekly medical appointments during the program follow an initial physical examination that includes a thorough health history, exercise tolerance test, and blood analysis.



High goals and academic learning experience made legible.

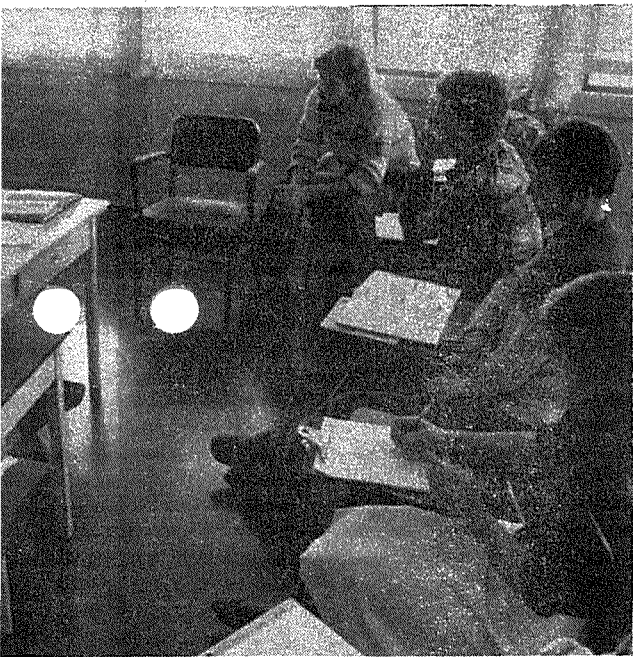


Community service programs, such as the Better Living Seminars (which include topics like nutrition, stress control, exercise, smoking habits, hydrotherapy, etc.), regularly involve both students and staff.



Arrows indicate crossflow of influence; ministry is supportive of and dependent upon.

# We're Taking God At His Word



Academic excellence are only a part of the total package made available to students at Weimar College.

As of this printing, more than 550 persons have completed the 25-day live-in program, most coming with some degenerative disease such as arteriosclerosis, diabetes or arthritis. With the opening of the main NEWS-TART Lodge in January of 1979, each program can include up to 36 persons. Results have been extremely encouraging.

"Most guests respond rapidly to our program," says Dr. Henri Wiebe, acting Medical Director. "We teach a change of lifestyle both for prevention and recovery from disease." Spouse attendance is advised to promote post-stay compliance with the newly-learned lifestyle.

Although the program does not rely on the use of drugs, necessary medications are continued and occasionally even prescribed during the program. The goal remains,

however, to free each NEWS-TART guest from the need of any medication. And this has been the case in many instances. One lady who had been taking sleeping pills every night for 20 years was able to stop with only a mild reaction.

A high-fiber, low cholesterol, low-fat diet is shared by everyone at Weimar Institute. Foods are prepared entirely without oil, sugar or any animal products. Fruits, grains, nuts, and vegetables meet every nutritional need and satisfy the appetite.

"I never thought it could be this good," says one staff member. "Sure, I had to re-

tute, is the idea of service; students are trained to help meet the needs of others through their chosen occupation. Not only is classwork built around this principle, but work and community service programs are also non-optional parts of the curriculum. Fifteen to eighteen hours per week are reserved for physical labor, and a weekly four hour period is devoted to community service. In addition to this, students regularly participate in other outreach activities such as Stop Smoking clinics, nutrition classes and other health seminars.

The low faculty-student

worship setting, and the staff experience the freshness and vitality of the young people.

"We naturally attract the kind of student who is already spiritually oriented," says Dr. Colin Standish, Dean of the College. "No self-centered goals are stressed; the program is based not upon competition, but upon cooperation."

## Active Senior Citizens Ministries

The Active Senior Citizens Ministries program for Weimar Institute is still in the plans. Rather than encouraging valuable, experienced persons to retire and lead an often-times lonely life, the Institute will invite them to live on the grounds in specially prepared housing. These active retirees will contribute their abilities and wisdom of experience to every phase of the Institute's program.

Already, the staff consists of a wide-ranged age group. Young and old alike are attracted to Weimar and work together as a whole.



Small group discussion is a vital part of any retreat weekend. Schedules for retreats are published in this BULLETIN.

educate my taste buds to appreciate what's really good for me, but I really like it now."

## Weimar College

The pioneer student body of Weimar College arrived in late September, 1978. Forty-five students, most from outside California, came with plans to major in one of three areas of emphasis: education, metropolitan ministry (a training to serve the needs of urban areas), or health. By early 1981, the student body exceeded 80, and a major in agriculture has been added.

The basis of Weimar College, as with the entire Insti-

ratio (about 4.8:1 in early 1981) is an important aspect of the College. Faculty work side by side with students in their daily labor and community service programs. Teachers are considered to be role models and they are able to express a personal interest in each student. Plans call for a maximum student body of about 180.

Because Weimar Institute is dedicated to Christian principles, students and staff are involved in daily corporate worship programs. And three times a week, students group and gather in various staff homes. This provides a two-way benefit: the students are involved in a family-type

## Community Outreach

Regardless of what program each staff member may be involved with, time for community outreach is reserved. With so many persons nearby needing physical and spiritual attention, Weimar Institute has dedicated itself to an aggressive Christian ministry. Jesus has called His followers to actively serve others.

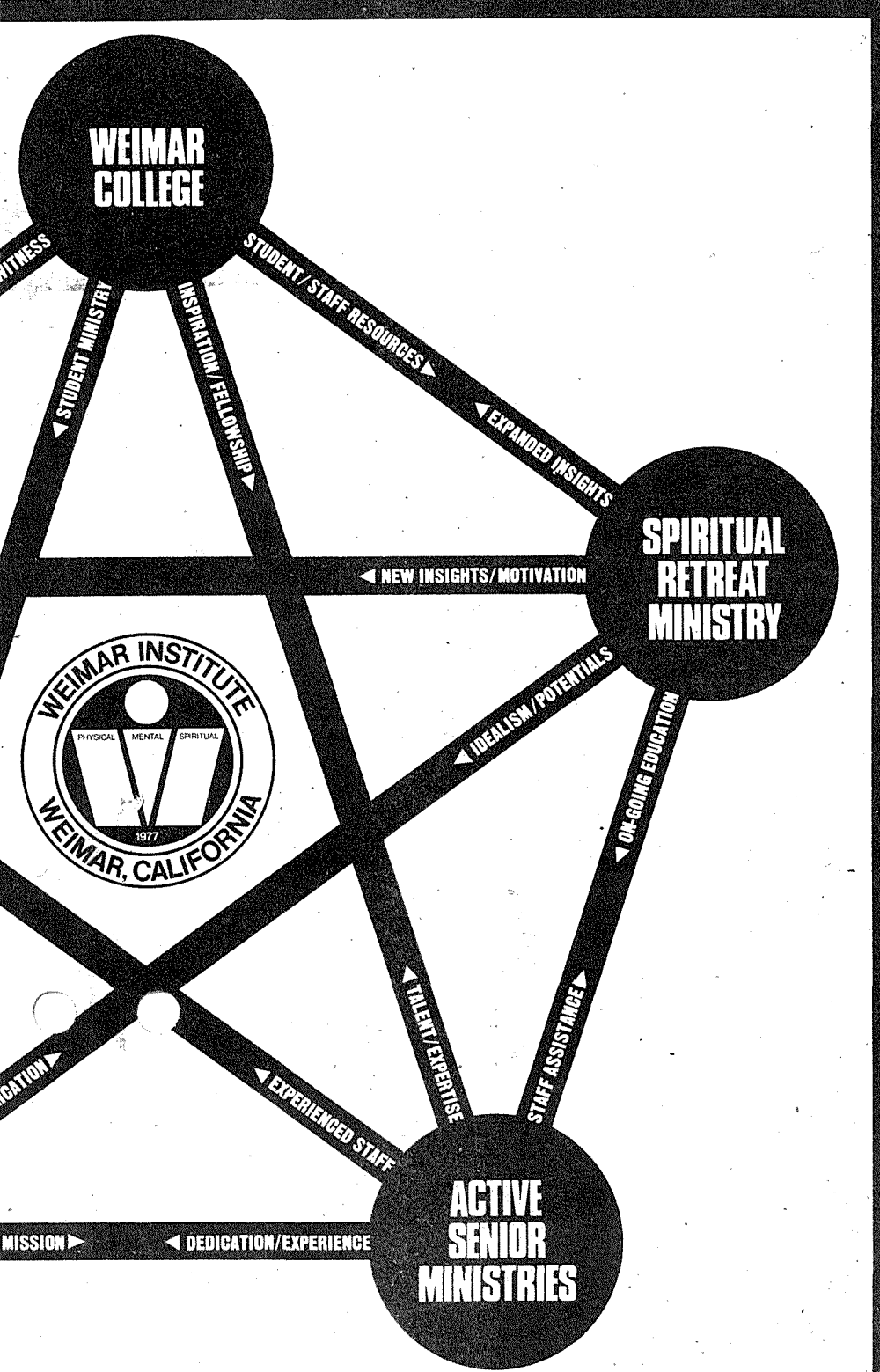
This service takes many forms; Bible study when requested, health seminars, home visits, practical helps, and often just a good conversation. The Good News is transmitted through word and action.

"It's genuine love...with skin on it," comments a staff member.

There is still much to be done. But for those who work at Weimar Institute, visit, or come as students or NEWS-TART guests, the future looks even more exciting.



Activity and interaction will be the tenor of life for the senior citizen who chooses to make his home at Weimar Institute. Drawing on his life experience, he (or she!) will be able to offer much to the various functions of the Institute.



Influence from other circles. Each phase of dependent upon the other.

# The Growth of an Institute

(Continued from Page 1)

But the results were astounding! There is more power in God's healing agencies than we had imagined, and our courage was high to move quickly ahead with expanded facilities.

In January of 1978, the first Weimar Educational Advisory Council met, spending four full days defining the educational program for Weimar step-by-step by inspired counsels. They agreed to offer a quality, balanced education, blending academic excellence with useful work and practical service to the surrounding communities. One experienced educator who came only to offer advice, found his heart drawn into this bold adventure of faith. And on March 29, we received a letter from Colin Standish, president of Columbia Union College, announcing that he would accept our invitation to become the Dean of Weimar College.

The Board approved a plan to open College just six months later, and the almost unbelievable task of preparing a campus, a faculty, and a curriculum began in earnest. Committees, hard physical work, long nights of writing, then more committees—they blur into a long summer. Yet on September 25, we found 46 students and 14 faculty members assembled for a spartan yet exciting first year.

## A GLIMPSE OF 1979

Once established and operating, important events at the Institute seemed to move much faster. Notice these highlights of the 1979 calendar year.

George Chen, M.D., is named to head the medical program at Weimar, taking the place of Dr. Zane Kime, who withdrew to pursue graduate studies.

Through a donation from Century 21 Better Living Tapes, Weimar opens its own cassette library and dupli-

cating service.

More than 28% of student tuition fees are covered by donations to scholarship funds.

The Agriculture Department buys a new Massey Ferguson diesel tractor and opens a 4,000 sq. ft. greenhouse.

On March 11, the newly refurbished NEWSTART Lodge opens, providing beautiful 15,000 sq. ft. facility for the health program. In June, 140 alumni of the program return for a Homecoming and Grand Opening celebration.

The bakery, carrying a large line of specialty breads, begins a large wholesale operation.

Elder Robert H. Pierson, former president of the General Conference of SDA's, presents the Fall Week of Prayer in our newly remodeled chapel.

The second school year begins in September with 54 students, and a new major in Agriculture.

## 1980 IN REVIEW

The new year begins with almost 15,000 names on the mailing list, and with each one being asked to help retire our indebtedness.

Two Weimar College students are in the Far East as student missionaries.

Two very significant properties are donated to Weimar, one to aid in developing a city ministry program; the other for beginning an academy on Weimar campus.

Our beloved teacher, Eric W. Hon, is laid to rest at the age of 72.

The Lassen Foundation begins major assistance in developing our soils, and in developing a food and soil analysis laboratory.

The third College year begins with 75 students and a newly remodeled women's dormitory.

A donation of 2500 ceramic molds, plus kilns and related ware, lays the foundation for a possible new student industry.

## IN 1981 AND BEYOND

As if in promise of things to come, the new year is barely weeks old when two college students celebrate their union with Christ, through baptism in the campus Chapel.

In quiet moments, we look back over the events of the past several years. It's a short but intense history. Had we known in April of 1977 what huge amounts of work

and faith would be required of us in bringing this adventure to even this present level of wholeness, it might be that some might not have voted "yes" quite so freely!

Yet it is God's promise that our strength is given only for the day. The Weimar Family has found that promise to be absolutely reliable. We are sure that there is no better way to discover the reality of God's intimate, loving interaction with His people, than to walk with Him daily in a project that is far beyond any normal human resources. In a very real sense, Weimar's history is His story!

## FROM OUR PRESIDENT

(Continued from Page 2)

which Weimar Institute and the Church cooperate. Officials of the local, Union, and General Conference are frequently conferred with, not only to seek their counsel, but also to keep them informed of our progress. Individuals representing all three conference levels serve on advisory councils which make recommendations to the Board of Directors. The community service phase of our college curriculum is organized to assist the churches in our area. Local pastors cooperate to help provide avenues of service for our college students.

Weimar Institute has no church on the campus, which might encourage members of nearby churches to seek the stimulation of an academic environment. Rather, students and staff are urged to join one of the surrounding churches in order to regularly share their talents in those Sabbath Schools and church activities. It is the desire of Weimar Institute to do nothing that would be counter-productive to the goals and objectives of the Church, but rather to support the mission of the Church in every way possible.

Since you have several ordained ministers on your staff, would it be appropriate to send tithe to Weimar Institute?

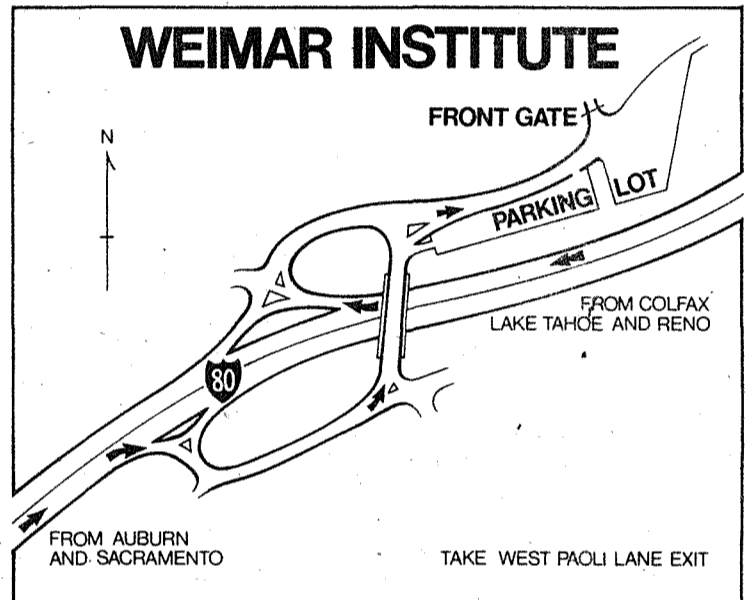
Weimar Institute takes the position that tithe funds are best given to the Church through usual conference channels. We do not solicit tithe funds, but rather encourage that they be given through the local church. All funds which come in the form of donations are gratefully accepted and prayerfully dispersed. Should we receive funds that are marked tithe, they will be allocated to the conference for the support of the ministry.

In summary, Weimar Institute is a private, non-profit institution made up of individuals who are dedicated to cooperate with the Church in proclaiming God's love, preparing individuals for service, and in hastening the day when Jesus can come.

Sincerely,  
Your brother in Christ,

*Robert L. Fillman*

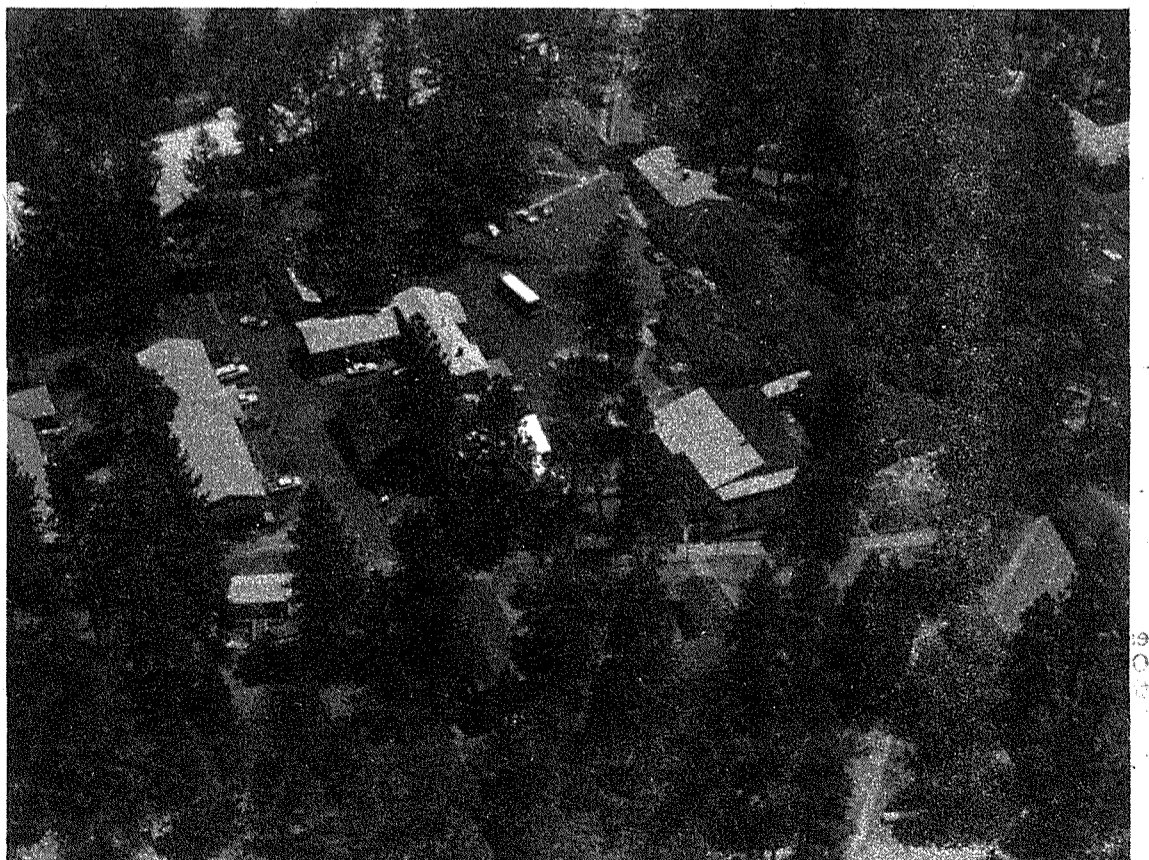
Robert L. Fillman,  
President



**WHERE IS WEIMAR?** Weimar Institute is located on the western slopes of the Sierra Nevada Mountains, at about 2,250 feet elevation. It is adjacent to Interstate 80, between the towns of Auburn and Colfax, about 45 miles east of Sacramento.

Coming from the west, go about 12 miles beyond Auburn, to the West Paoli Lane turnoff. Exit to your right, then follow the road back over the freeway to your left. You will then be facing the Institute grounds. Jog to your right and go through the main gate on your left.

Coming from the east, go about 6 miles beyond Colfax to the West Paoli Lane turnoff. After exiting to the right, turn back 180 degrees and you will be paralleling the Weimar property. The gate is on the left.



Aerial View of Weimar Institute

# Mission Vision

By Pat Payne

It took VISION to stay  
In the garden to pray  
While multitudes clamored nearby.  
Just why didn't He run  
(With so much to be done!)  
What made Him content to just die?  
For He didn't take flight,  
Nor there turned He to fight;  
Instead, He on God would rely.

It took VISION to be  
Mary's Child at her knee,  
While lepers and blind men knew not  
That the Father above,  
In unutterable love,  
In Him gave the answer they sought.  
As a Child He must grow;  
As a Man He would go—  
To us this great lesson He taught:

It takes VISION to hold  
All your talents and gold  
In God's treasure box of "delay."  
It seems all must be spent,  
So that all men repent  
Before it's too late in the day.  
But, it must be made known  
That not all things are grown  
To ripen in just the same way.

And all heaven declares  
It is God Who prepares  
The season, the fullness, the hour.  
And in Him we must rest,  
For in Him is our best,  
In Him is the glory and power.  
For He knows what's the task;  
He knows what we should ask—  
His Spirit on us He will shower.

It takes VISION to live  
As God only can give;  
To work, or to play, or stand still.  
Yes, it's God Who will bring  
To full fruit, man or thing.  
And us? We must walk in His will.  
For our missions are these:  
To go forth (on our knees)—  
Or quietly sow by His skill.

## "Old Weemah"

When the Post Office was established in 1886, the Post Office Department rejected the name of the railroad station, New England Mills, because it was too long. Mary E. Mitchell, the postmaster, and the residents decided to call the place in memory of 'Old Weemah,' a colorful chief of the "Oleepas" in the 1850 s. His mark 'X' and the name 'Weima' appeared in a document published in the Placer

Times on May 27, 1850. Since this spelling was apparently unknown in the 1880 s, the name of the Post Office was spelled, though not pronounced, like that of the German city of Goethe and Schiller."

Gudde, Erwin G. "California Place Names" 1969, Univ. of Calif. Press. So this small town is called and pronounced: "Weemar." Hence, Weimar Institute.

### I WANT TO HELP!

Here is my gift of \$\_\_\_\_\_

- to help cancel Weimar's mortgage debt.  
 toward Weimar's monthly operational expenses.  
 to be placed in Weimar College's Worthy Student Fund.  
 other.....

### PLEASE SIGN ME UP FOR...

- the Weimar Institute Bulletin.  
 I am already receiving the Bulletin.  
 recipe book: FROM THE WEIMAR KITCHEN (\$5<sup>00</sup>)

### PLEASE SEND ME...

- information regarding Weimar's NEWSTART Health Center.  
 Weimar College Student Application.  
 Other.....

NAME .....  
ADDRESS .....  
CITY ..... STATE ..... ZIP .....

Please Print Clearly

SEND TO: Weimar Institute • P.O. Box A • Weimar, CA 95736

# NEWSTART

(Continued from Page 3)

The name "NEWSTART" dates back to Weimar's first 25 day live-in health program in May of 1978. Two of the first guests to register were Bill and Ethel Dawson. Coming from Stockton, CA, they sought help for Ethel, who was facing possible by-pass surgery. Before the first week was over, however, Bill, too, had enrolled as a patient, discovering during the initial testing that he had serious health problems as well.

Lively, energetic Bill had a head full of creative ideas. So, when these pioneer patients of Weimar's health program were invited to contribute suggestions for a name for the soon-to-be-completed main lodge under renovation, he put his mind to work immediately.

It wasn't long before he came up with an acronym that not only integrated the eight natural remedies upon which the program is based, but aptly described its overall purpose and intent as well. In fact, Bill's suggestions summed up in two words what the Weimar experience with God's natural remedies gave him — a NEW START!

"We made such fundamental changes," Bill reported. "I don't know of any experience in the past that has produced anywhere near the benefits we've derived from the program here at Weimar in such a short period of time."

Each of the letters in the words NEW START stands for one of the eight natural remedies, as depicted in the accompanying drawing.

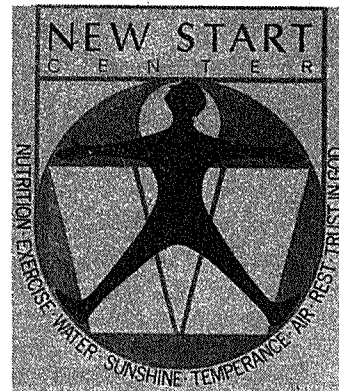
Thus, the refurbished lodge was duly christened "NEW START LODGE." And things might have remained that way had it not been for the perceptiveness of a visitor last summer.

Dr. Ethel Nelson, from Bangkok, Thailand, pointed out the tremendous potential of NEWSTART as a concept encompassing the total health program here at Weimar Institute. Enthusiasm spread rapidly, until, as of January 1981, the official name of the Health Education Center became NEWSTART Health Center, shortened to NEWSTART CENTER.

The term Health Education Center had described only one aspect of the program: the cognitive part. It did not describe the process and results of applying the mental, physical and spiritual knowledge that is gained here at Weimar. And such application is indeed an integral part of the program. Hence, the name NEWSTART follows a logical formula:

Health Education + practical application equals a NEW START.

It is fitting that such a distinctive name and health program would have its own identifying label, or logo. Staff artist, Terry Zeyen, developed this design.



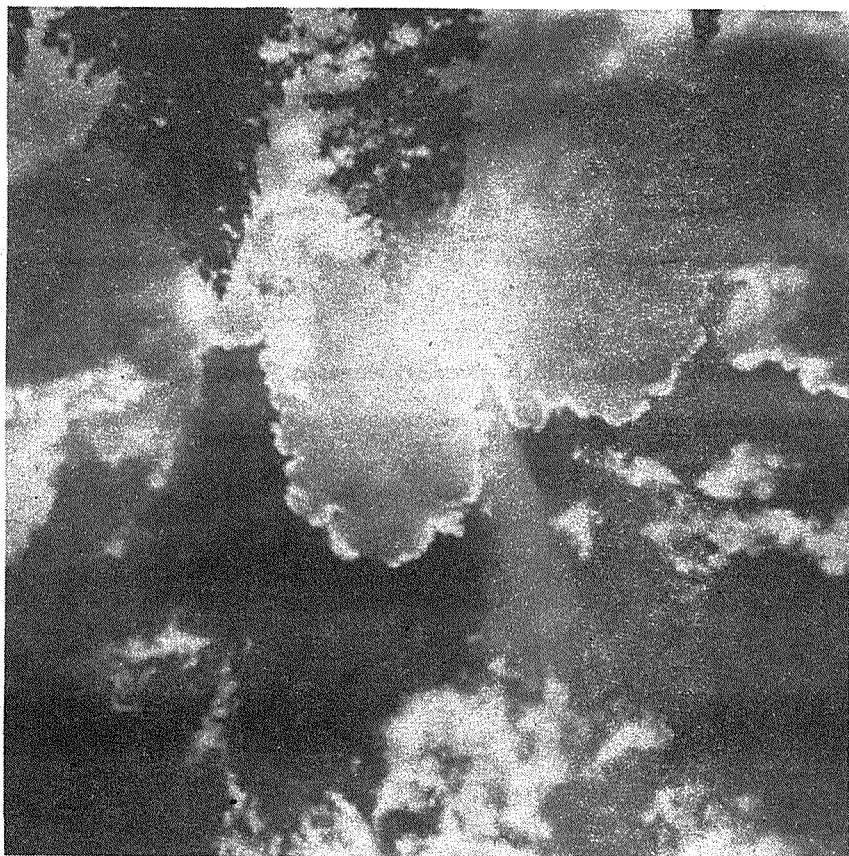
NEWSTART is superimposed on the Weimar Institute logo, signifying that the health center is an integral part of the Institute.

Symbolic of many theological and natural truisms, the new logo portrays the total man (in gold, signifying the body as the temple of God) completely encircled (by the wholeness that God imparts) and looking upward and outward to the Source of his well-being. His focus is on God's natural laws of health, abbreviated by the letters in NEWSTART.

In this powerful yet subtle way, our logo presents the NEWSTART concept, not only as Health education + practical application, but it adds the third and most important dimension: — divine power — the encircling presence of Jesus. Without this divine help, the first two concepts prove only transitory and temporary in affecting true lifestyle change.

Our formula now becomes: Health education + practical application + divine power equals NEWSTART, in its finest sense!

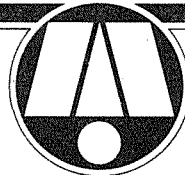
“ . . . His glory covered the heavens, and the earth was full of His praise. And His brightness was as the light. . . . ” Habakkuk 3:3,4



SPECIAL INTRODUCTORY ISSUE

BOX A, WEIMAR, CALIFORNIA 95736

WEIMAR INSTITUTE BULLETIN



Non-profit  
U.S. Postage  
Paid  
Permit No. 2  
Weimar, CA

Address  
Correction  
Requested

## FROM OUR CHAPLAIN

By Dick Winn

Just as a political party needs a platform so that voters can decide whether to stand with that party and its candidates, so any Christian organization needs a set of basic principles, of key positions held dear, so that people will know what it stands for. And since Weimar Institute, as a non-profit service organization, offers helpful services to people, and even asks for help from others, we should name the planks in our platform, too.

We suspect the phrase “glittering generalities” was coined to describe political platforms. We could offer some of those, too — like “We believe in the Bible,” and “We love people!” But that would be taken for granted. What are the particulars that define Weimar Institute in sharp precision? Perhaps I could name several of them, though I’m sure that tomorrow I will have thought of several more I’ll wish I had added!

1. We’re convinced that God loves us. Now that’s not an exclusive boast. He loves us all. But it is His love, the warm assurance of His present acceptance of us as a people, that alone can ever enable us to do anything unselfish for people. To say this is to remind all of us of the source of anything good that may ever come from our work here. The cross of Christ, the unconditional love expressed there, is the foundation of all that we do. “We love, because He first loved us” (1 John 4:19 RSV). Because we long to love as He loves, we freely affirm that He loved us first and best.

2. We’re persuaded that God’s plan is sensible. Because we see it that way, we find it attractive, we know it works, and we can trust it. His plan for education does produce superior growth in students — physically, mentally and spiritually. His concepts for healing produce maximum total benefit. Four years ago, when we were first putting ideas on paper, all we really

had was a set of books and strong convictions. “It must be true, because God said it,” we’d say. Now we’re inclined to say, “God said it, because it is true!” His principles really do work, and we get (as it were) a front-row seat on the adventure.

3. Our highest goal is to portray God as loving and sensible. To know Him, as He really is, is to love and trust Him. We’re grieved that so many are indifferent to Him, because they have such a distorted picture of Him. Everyone who takes the name of Christ has something to say about Him — whether that be good or bad. We want our message to be a positive one, by the words that we speak, the lives that we live, and the programs that we operate. We’re painfully aware that we are hardly perfect; but we long for the privilege of reflecting Him in an attractive way.

4. We are sure that people will grow best in a setting of love, truth, and freedom. For our college students, NEWS-



TART guests, even our staff, personal growth is a goal. To this end, we relish an environment of warm acceptance and joy. As people think about new lifestyle options, they should be confronted by principles, not policies; by reasons, not just rules; by individual convictions, not authority. Then they should enjoy the freedom to determine the individual application to their own lives.

5. Servanthood is more important than survival. God’s grace (through a thousand miracles of all sizes) put us here. We can depend upon nothing else. If we live and

work to His glory, we have no anxiety; it’s His project, built on His calling. But if we become more concerned with survival than with servanthood, with our image than God’s image, with clever ideas than with careful obedience, then God has a right — even a duty — to close us down.

These are some of our planks. To find out what kind of structure they support, keep reading this BULLETIN and the others available on a monthly basis. And join us in prayer that, for His sake, God can keep this adventure joyfully alive.